

The background is a watercolor illustration of a landscape. It features a body of water in the center, rendered with dark, swirling strokes. In the foreground, there are rocky, uneven terrain with dense, dark green vegetation. In the background, there are rolling hills or mountains, also covered in dense vegetation. The sky is a pale, light blue color.

O MURO

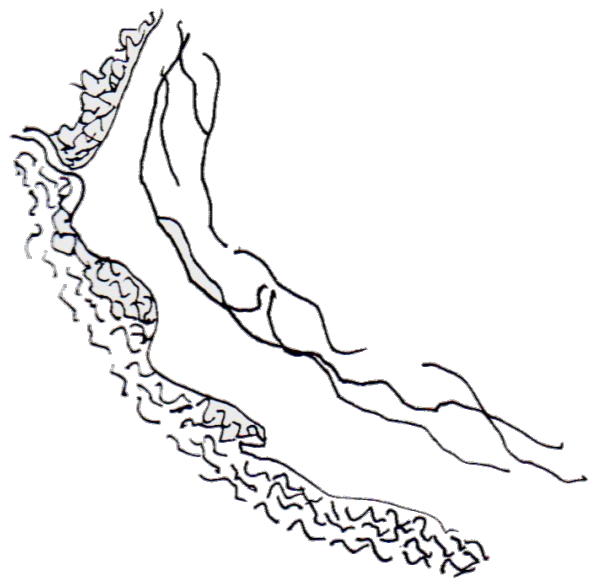
E A JANELA

Isadora Giuliano

Mônica Lopes

Sara Vicentini





Progetto
~~Terreno~~



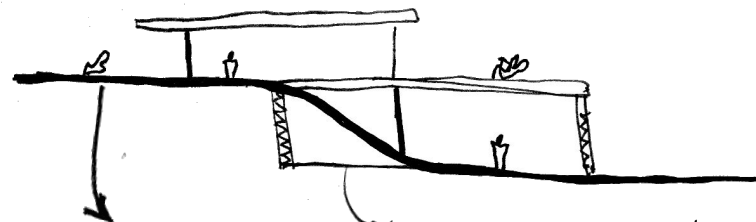
- CASA DAS CANOAS -

São Conrado- RJ (1951)

* Oscar Niemeyer



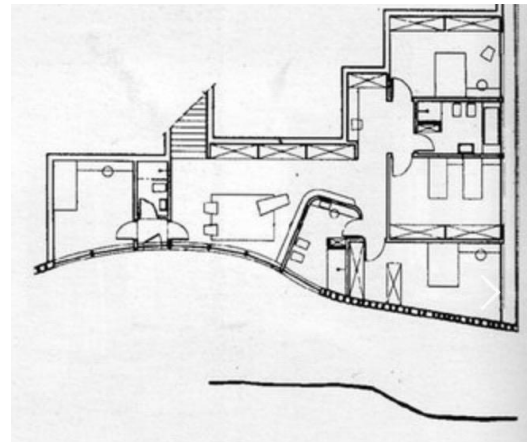
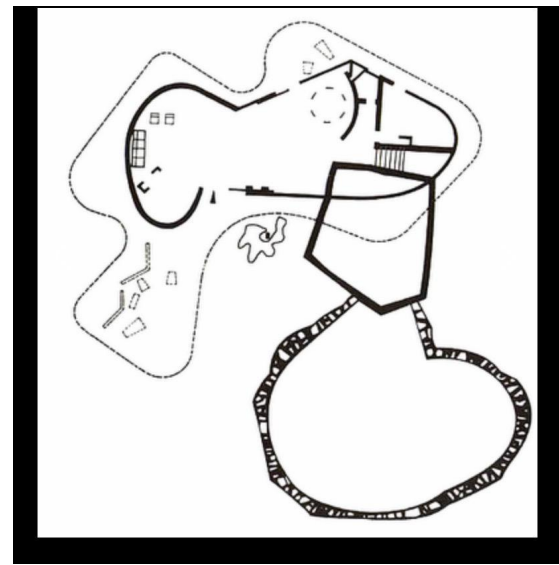
A rocha incrustada é elemento central, atravessando paredes e janelas, integrando e originando o projeto.



Platô cria pátios externos e planos protegidos por gradis.

O nível enterrado é uma estratégia projetual que dota o terreno descendente.

- Oscar nos ensina que a beleza é leve - F. Gullar



MATERIALIDADE E SUA EXPRESSÃO TECTÔNICA

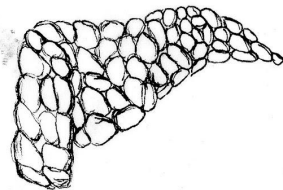
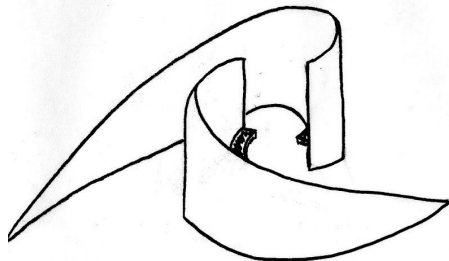
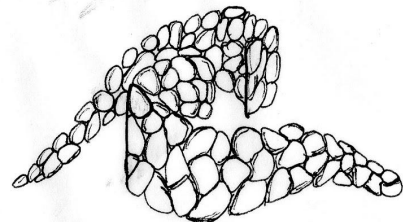
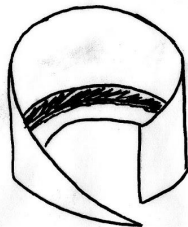
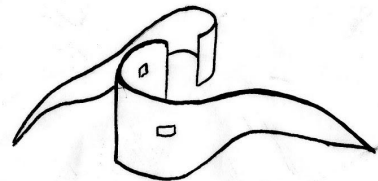
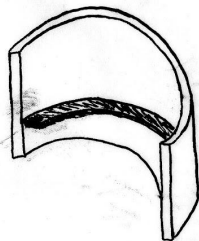
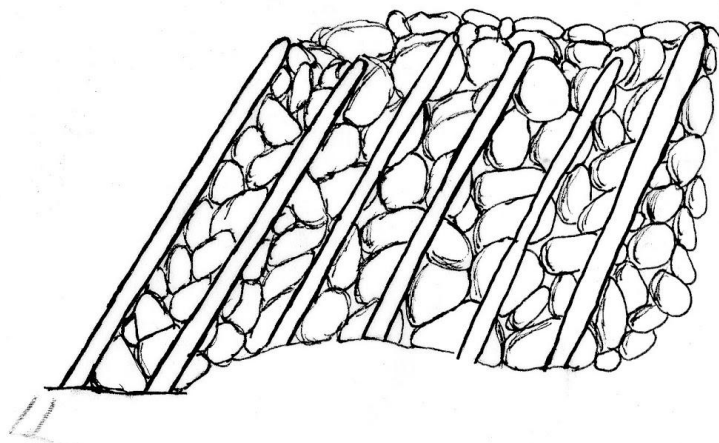
- material: ~~madeira~~ em
L trançada pedra ripas.

pedra
pedra

A forma surge através da interação das propriedades intrínsecas do material, dos condicionantes culturais e, com maior potência, as configurações naturais do terreno. A intenção projetual é remeter no muro a ideia de extensão do relevo, que se apresenta a quem visita a trilha.



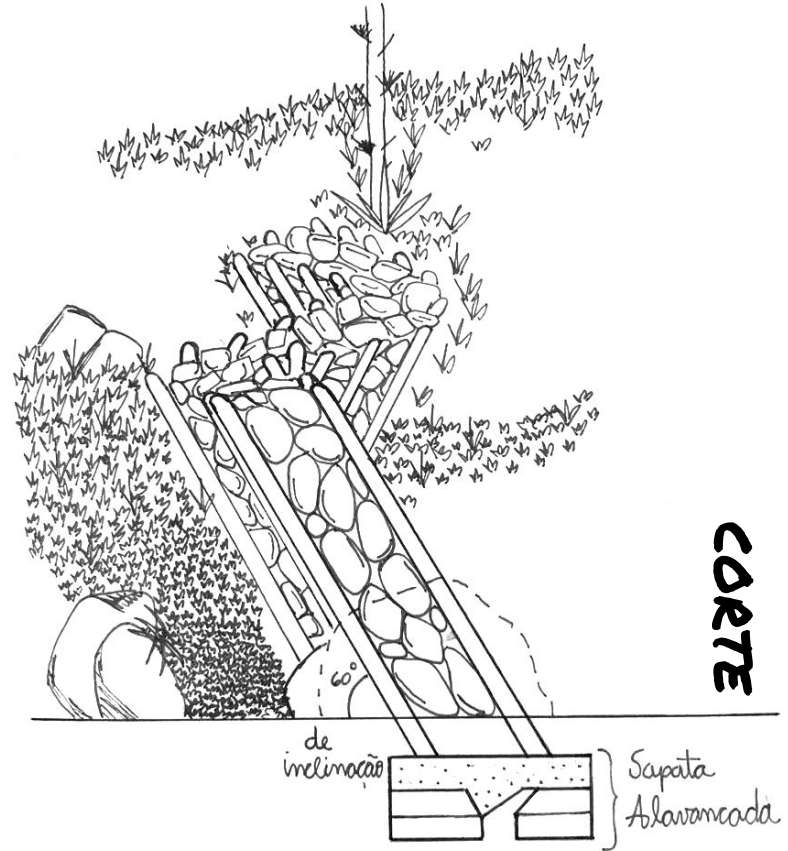
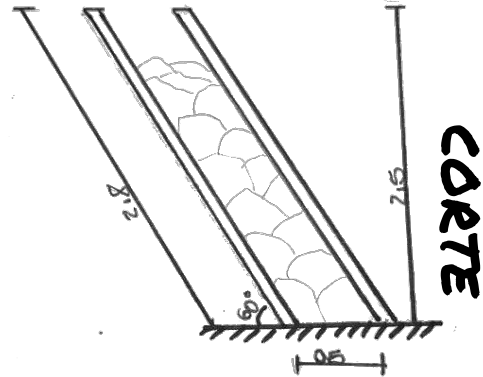
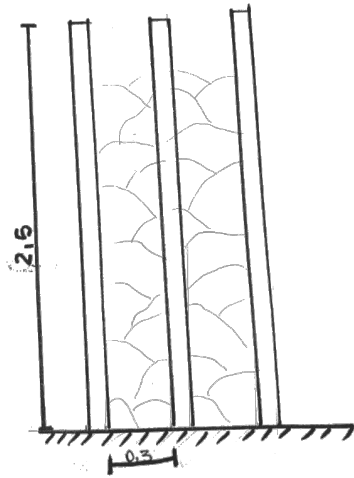
DESENVOLVIMENTO



EXPERIMENTAÇÃO



DETALHAMENTO



CONCRETIZAÇÃO

